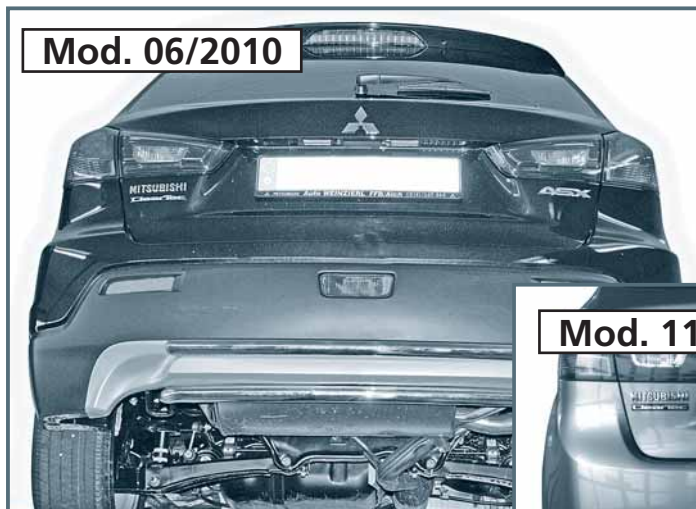


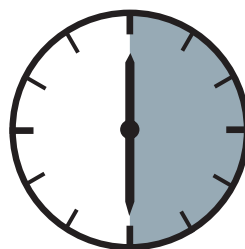
15B

Mitsubishi ASX; Modell 06/2010, 11/2012
Two Part Rear Bar 38 / Heckrohr 38; 2-teilig



ASSEMBLY INSTRUCTIONS

Montageanleitung • Instructions de montage

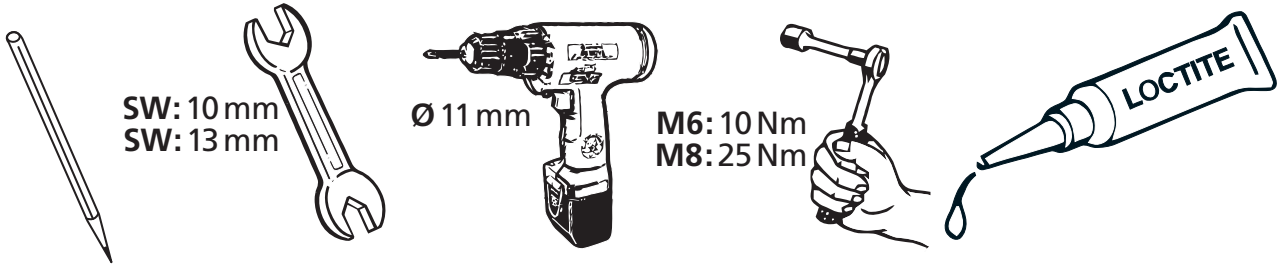


30 Minuten

Artikel-Nr:

15B 4034 Stainless Steel
15B 5034 Steel black
15B 9034 Mounting Set

Revision 3: 23.01.2015



1 15B 4034.1 (15B5034.1)



2 15B 4034.2 (15B5034.2)



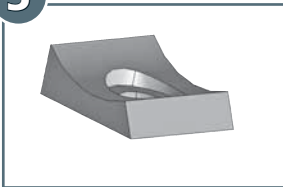
3 15B 5032 2x



4 ø7; 174 5167 2x



5 005898 4x



a		M6 x 25; DIN 933 Zn	2x
b		M8 x 30; DIN 933 A2	6x
c		M6; DIN 934 Zn	2x
d		ø6; DIN 127 Zn	2x
e		ø8; DIN 127 A2	6x
f		ø6,4; DIN 9021 A2	4x
g		ø8,4; DIN 9021 A2	6x
h		SW 13	2x

